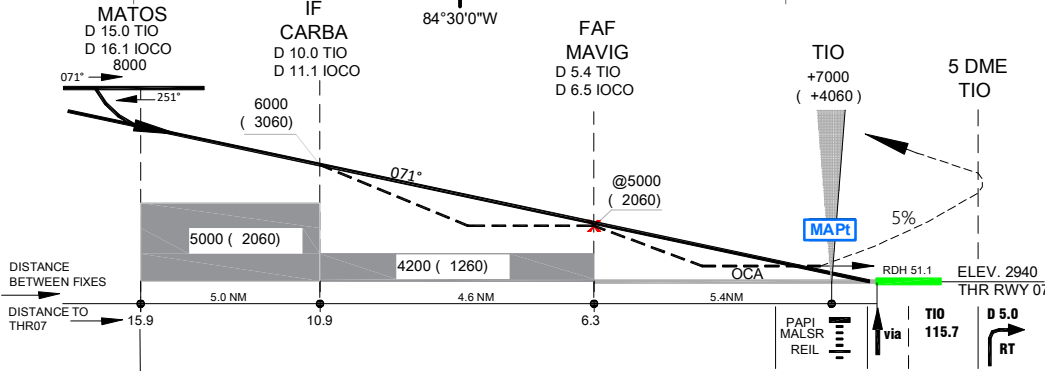
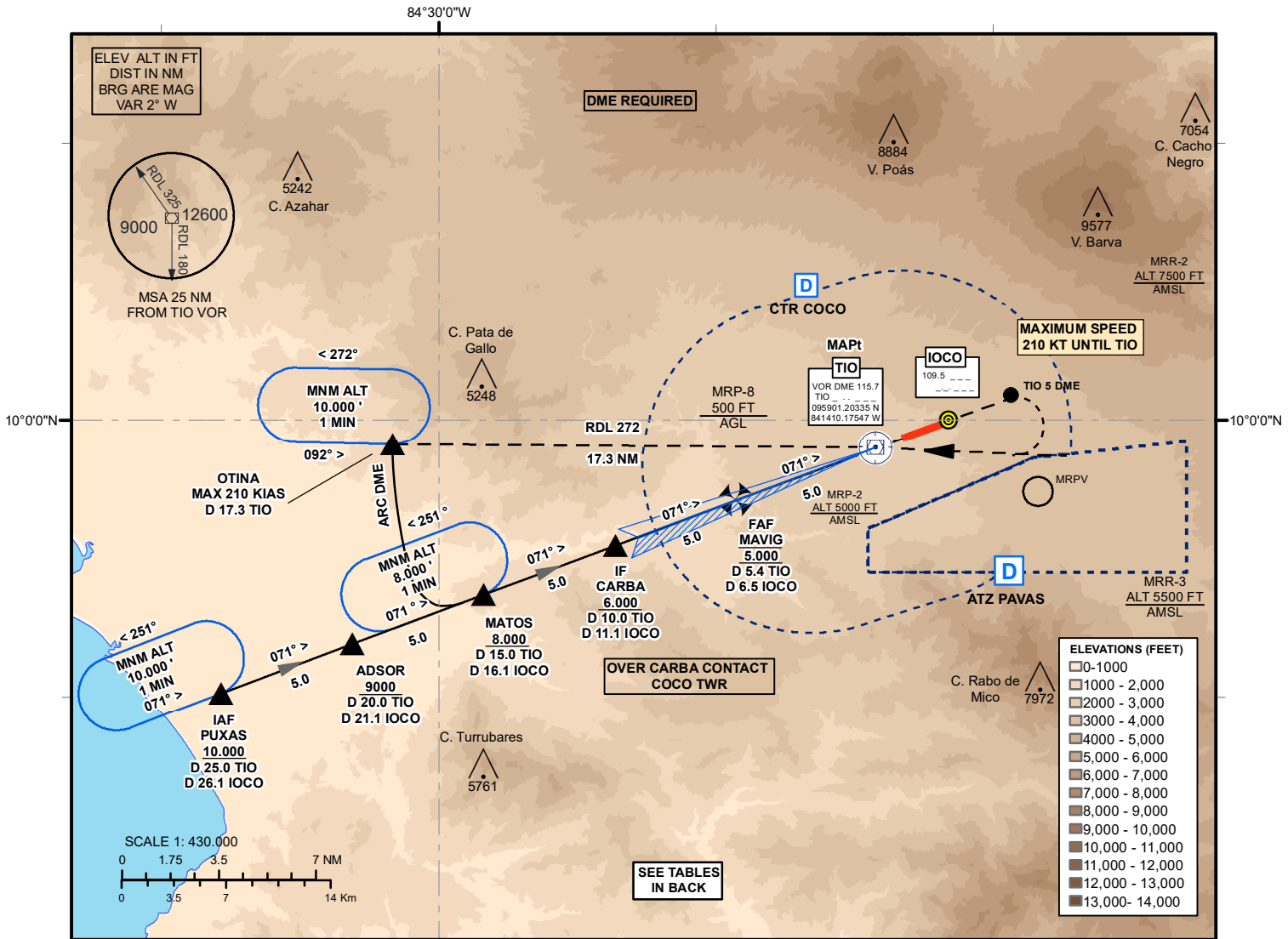


**INSTRUMENT APPROACH  
CHART**

**ALAJUELA, Intl (MROC)  
LOC Y RWY 07**

AD. ELEV 3048 ft  
THR RWY 07 ELEV 2940 ft  
T.A. 19.000 ft

COCO ACC (R) 119.6  
COCO APP (R) 120.5  
COCO TWR 118.6



**MISSED APPROACH:**  
CLIMB ON RDL 071 UNTIL 5 DME FROM TIO VOR. THEN TURN RIGHT TOWARDS TIO VOR AND CROSS IT AT 7000' OR ABOVE. LEAVE TIO ON RDL 272 UNTIL OTINA. CLIMB TO 10000' AND HOLD AS PUBLISHED

**FOR OBSTACLES CLEARANCE:**  
RATE OF CLIMB 300 ft/NM,  
MAX SPEED 210KT  
BANK ANGLE 20°

RWY 07 STRAIGHT IN APPROACH	CAT	A	B	C	D	CIRCLING		
		OCA/H 3250 (310)					N/A	
Ground Speed	KT	70	90	100	120	140	160	180
VSP 5,2% (3°)	FT/MIN	372	478	531	637	743	849	955
FAP to THR07 6.3NM	MIN:SEG	05:24	04:12	03:46	03:08	02:42	02:21	02:05